

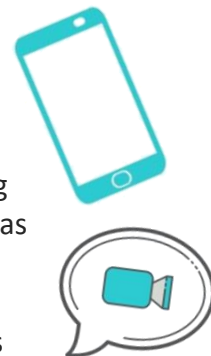


BIG IDEAS WEEKLY

Our Littles or Mentees need you now, more than ever.

We encourage you to continue to connect weekly with your Little Brother or Little Sister and to continue to explore new ways to have fun despite social distancing. Big Brothers Big Sisters of Halton and Hamilton, we will send you a newsletter, weekly, promoting some ideas that may help to keep you connected.

We would encourage all friendships to submit their own ideas and stories of their attempts at virtual fun, so that other friendships may benefit from them...



WATCH SPRING TRANSFORMATION

Pick a spot in your yard or neighbourhood. Visit it each week during the spring, sketching the changes you see. You can share your drawings or observations over a weekly phone call.

ANSWERS FROM LAST EDITION'S RIDDLES

1. What's black and white and read all over? → **NEWSPAPER**
2. You walk into a room with a rabbit holding a carrot, a pig eating slop and a chimp holding a banana. Which animal in the room is the smartest? → **YOU ARE**
3. What always murmurs but never talks, always runs but never walks, has a bed but never sleeps, has a mouth but never eats? → **A RIVER**
4. What starts with an e but only has a single letter in it? → **ENVELOPE**

UPCOMING MAGIC SHOW

Scott Hammell is a four-time Guinness World Record holder, who has been entertaining professionally since 1998. In the two decades since, he has hung upside down from a hot air balloon while locked in a straitjacket and chains at 7,200 feet (World's Highest Suspension Straitjacket Escape), dangled by his ankles and juggled for over a minute and a half (Longest Inverted Juggling Duration), successfully completed a card trick while skydiving (World's Fastest Moving Card Trick) and jumped from an airplane to skydive while blindfolded and handcuffed (Highest Blindfolded Skydive).

Now Scott wants to teach you some magic! Scott has generously offered to host a free virtual magic workshop for our Bigs, Littles and Families. If you are interested in signing up, please contact your caseworker and we will send you more details.



PLAY A GAME OF BATTLESHIPS!

Fill out your form (my ships) placing your 7 ships (using the letters below) vertically, diagonally or horizontally. Make sure you use the right amount of Letters in a row, for examples, when you put your cruiser in, you should be using 3 consecutive squares, each with a C in it. Take turns guessing co-ordinates (I.e. D3). First one to find (sink) all their opponents battleships, wins.

My Ships



A								
B								
C								
D								
E								
F								
G								
H								
	1	2	3	4	5	6	7	8

Aircraft Carrier

A A A A A

Battleship

B B B B



Cruiser

C C C

Destroyers

D D

D D

Submarines

S

S

Their Ships



A								
B								
C								
D								
E								
F								
G								
H								
	1	2	3	4	5	6	7	8

Aircraft Carrier

A A A A A

Battleship

B B B B



Cruiser

C C C

Destroyers

D D

D D

Submarines

S

S

SPRINGTIME PUZZLES

Set a timer and see who can complete the word search first.

Spring Word Search

K L S O I L L I R P A D U O L C R R
I D T C E S N I O S H O V E L G A L
T P R G O F W O R M Z S W D N L H G
E B U A R E W O H S T A E I L T V A
B E L D I X P F T O H E R I R W X R
I B W O D N H I O T S P P A P S M D
R R A V O L C R C W S R E K L E A E
D L R I W M E O O N E F C L A A R N
E E M O M A Y B A T I I C F N S C G
N A B L L Y N R A T H C S L T O H R
E F U E I I E C S C D I G P I N J O
S F T T A T H A T C H P W S R L R W
T R T R A W D A F F O D I L T O A K
U X E W J I S U N S H I N E W O U C
I K R L G N S F R A I N Y E O E R T
Z C F K X D Q A P I L U T X G E E M
M C L M E T S L L A B E S A B G Q D
O M Y F L O W E R G A L L E R B M U

April	fog	puddle	stem
baseball	garden	rainbow	storm
bird	grow	raincoat	sunshine
bloom	hatch	rainy	thaw
butterfly	insect	roots	tulip
caterpillar	kite	season	umbrella
chick	leaf	seed	violet
cloud	lilac	shovel	warm
daffodil	March	shower	water
dig	May	soil	weed
earth	nest	spring	wind
egg	picnic	sprout	worm
flower	plant		



SPRINGTIME PUZZLES

Work together to come up with the answers to the crossword below ...



1. A spring month.
2. A spring flower.
3. The young of a chicken.
4. A colour of spring.
5. A young rabbit.
6. A flower especially of a fruit tree.
7. Plants that have narrow green leaves, that are eaten by cows, sheep, horses etc.
8. The fifth month of the year.
9. To come out of an egg.
10. See picture.
11. A rounded part of a plant that is under the ground and that grows into a new plant during the growing season.
12. A baby goat.
13. The place where a bird lays its eggs.
14. See picture.
15. Spring, winter, summer, fall!
16. What snow does in spring.
17. When the sun shines.
18. A long, thin animal that has a soft body with no legs or bones. It lives in the ground.
19. An indoor or outdoor spring activity.
20. To stop being frozen.
21. A baby sheep.
22. A small part that grows on a plant and develops into a flower, leaf, or new branch.
23. A baby horse.

SPRING



iSLCollective.com